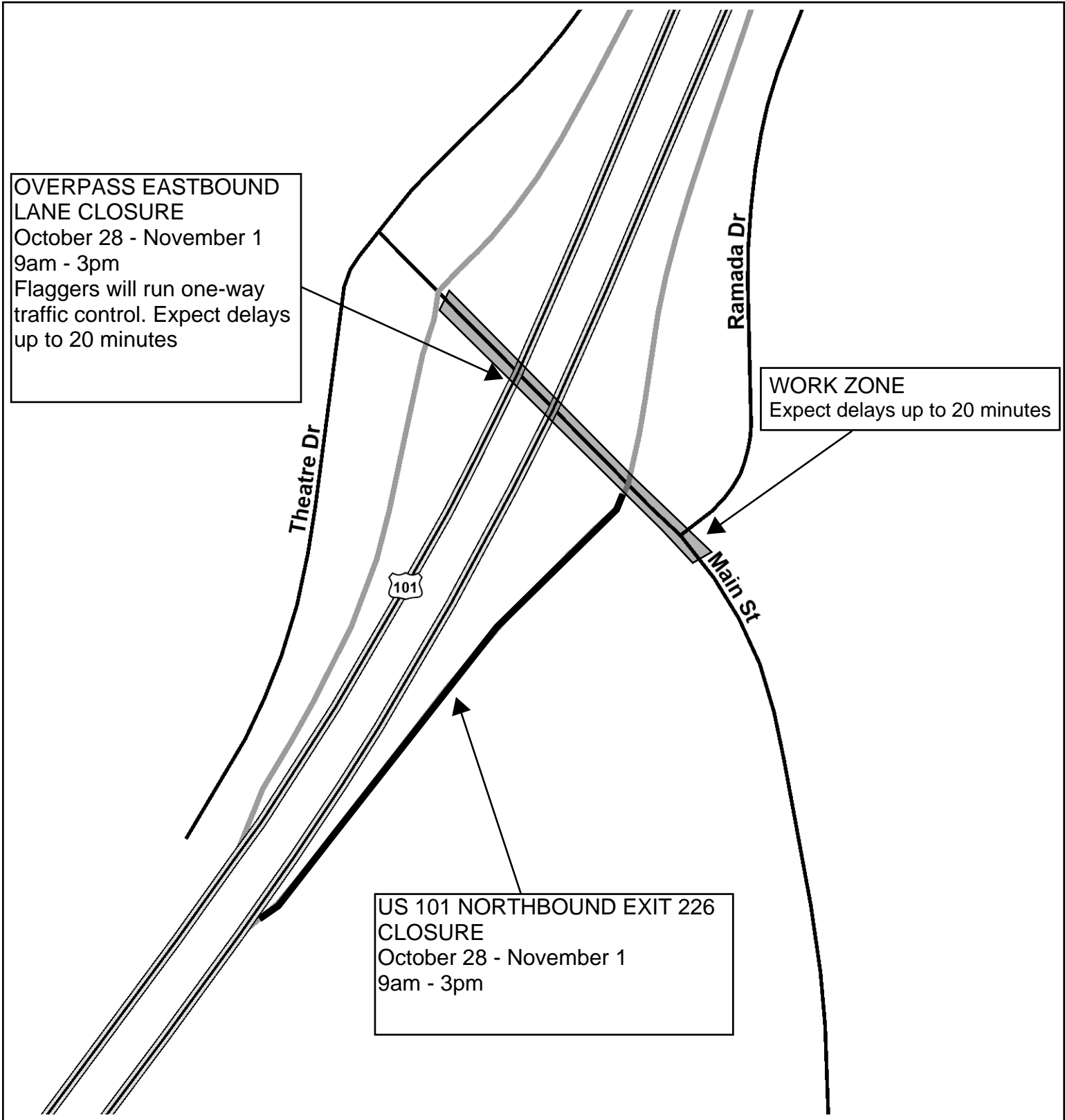


**OVERPASS EASTBOUND
LANE CLOSURE**
 October 28 - November 1
 9am - 3pm
 Flaggers will run one-way
 traffic control. Expect delays
 up to 20 minutes

WORK ZONE
 Expect delays up to 20 minutes

**US 101 NORTHBOUND EXIT 226
CLOSURE**
 October 28 - November 1
 9am - 3pm

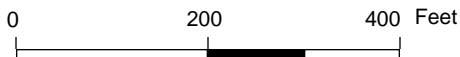


VICINITY MAP

Main Street, Templeton

COUNTY OF SAN LUIS OBISPO
 DEPARTMENT OF PUBLIC WORKS

1: 2,400



Map by: R Gajdos

Printed: 10/22/2024

